



# HASSMAN RESEARCH INSTITUTE

Improving the Quality of Life

## QUALITY

DELIVERING HIGH QUALITY SERVICES TO EACH STUDY PARTICIPANT. A FOUNDATION OF OUR COMPANY AND FOR EACH AND EVERY STUDY WE EXECUTE.

## EXPERIENCE

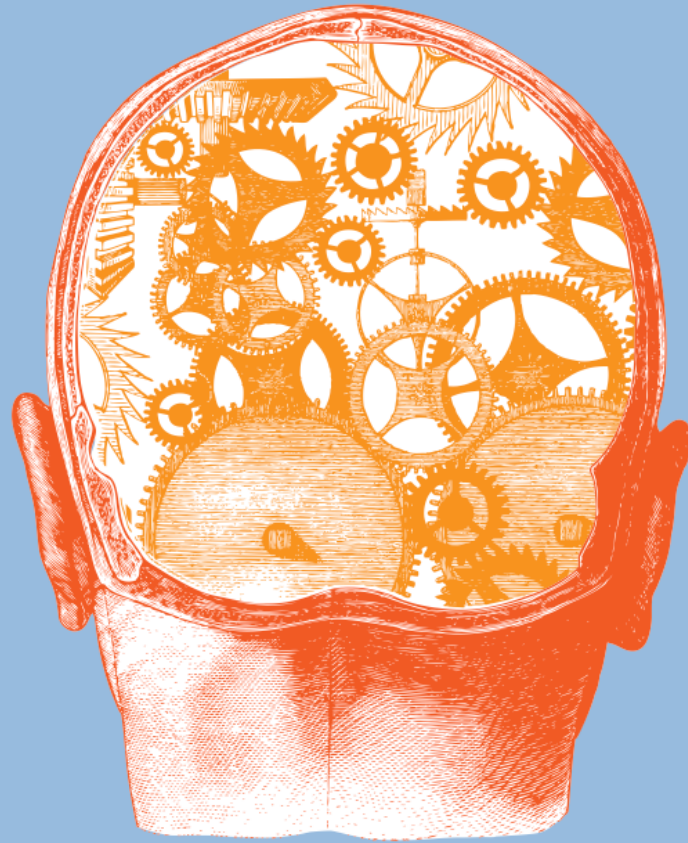
OVER 35 YEARS OF EXPERIENCE CONDUCTING PHASE I-IV CLINICAL TRIALS

## INNOVATIVE

2 OUTPATIENT UNITS • 1 INPATIENT UNIT • SPACE TO HOUSE 40 BEDS • PRIVATE DOSING • 14 EXAM ROOMS

## EXPERTISE

SPECIALTIES INCLUDE: ADDICTION, DERMATOLOGY, ENDOCRINOLOGY, GASTROENTEROLOGY, NEUROLOGY, PAIN, AND PSYCHIATRY.



## GEARED FOR SUCCESS

WITH TWO LARGE CAMPUS IN MARLTON AND BERLIN, NEW JERSEY, BOTH JUST TWENTY MINUTES FROM PHILADELPHIA, HASSMAN RESEARCH INSTITUTE (HRI) IS A LEADING RESEARCH AND CLINICAL TRIALS ORGANIZATION WITH OVER 35 YEARS OF EXPERIENCE CONDUCTING PHASE I-IV CLINICAL TRIALS IN A WIDE VARIETY OF THERAPEUTIC AREAS, INCLUDING ADDICTIONS, GENERAL MEDICINE, HEPATIC AND RENAL, HUMAN ABUSE LIABILITY (HAL), MEDICAL/INFECTIOUS DISEASE, NEUROLOGY, PAIN, PSYCHIATRY, AND SLEEP. HRI IS COMMITTED TO DELIVERING HIGH QUALITY SERVICES TO EACH STUDY PARTICIPANT. QUALITY IS A FOUNDATION OF OUR COMPANY AND FOR EACH AND EVERY STUDY WE EXECUTE, OUR DEDICATION TO QUALITY IS UNCOMPROMISED.